

The Leadership Journal

Summer 2015

A publication of the
Leadership Academy
of Madison County



GOODGOOD



36 Youth Attended This Year's Camp!

YLA

IT'S summertime!

This edition of *The Leadership Journal* is dedicated to our Youth Leadership Academy, known to most of you as YLA.

We've just returned from Camp Tecumseh and we are so excited to begin a new year with 36 new YLA students filled with energy and enthusiasm for their journey in Servant Leadership.

We (the coaches) may be worn out, but they are ready to "Go Do Good!" Their energy and passion are contagious...read on and we're sure you'll catch their spirit!

UPCOMING

LAMC EVENTS

LAMC

Wednesday
September 2, 2015

- Stop by our annual **Meet & Greet** at Hoosier Park any time between 6 and 8 pm to welcome the LAMC Class of 2016.
- See Page 6 for MORE INFO and how to RSVP for this free networking event at Hoosier Park.

Saturday
September 19, 2015

- **United Way Truck Pull** - Let's put a few teams together! Challenge your classmates or challenge another class! You know you want to! A fun way to show LAMC pride while helping your community. Click [HERE](#) or contact Pam or Beth for more info. Let's do this!

Monday
October 26, 2015

- **ALUM-NITE is back!** You won't want to miss this evening. Let's build on last year's success of "Laugh Out Loud Leadership."
- Details and invitations will be arriving in your inbox next month but be sure to put this great night on your calendar now!

YLA CLASS OF 2016



Gracie Anderson
Lapel H.S.

Dawson Ayers
Lapel H.S.

Hannah Boerner
Anderson H.S.

Cameron Bowen
Lapel H.S.

Brielle Boynton
Pendleton Heights H.S.

James Brandon
Anderson H.S.

Grace Brenner
Alexandria Monroe H.S.

Alex Butler
Anderson H.S.

Claire Contos
Anderson H.S.

Allyson Creamer
Elwood H.S.

Aaron Cruz
Elwood H.S.

Taylor Edwards
Anderson H.S.

Alex Fricke
Anderson H.S.

Daniel Gaines
Alexandria Monroe H.S.

Michaela Garner
Pendleton Heights H.S.

Samantha Hammel
Pendleton Heights H.S.

Phoenix King
Anderson Prep Academy

Joseph Kirkpatrick
Anderson H.S.

Gabby Kramer
Pendleton Heights H.S.

Samantha Libler
Alexandria Monroe H.S.

Karsyn Litsey
Frankton H.S.

Sarah McNeal
Anderson Prep Academy

Jessica Meyer
Pendleton Heights H.S.

Blake Morehead
Alexandria Monroe H.S.

Tillie Murphy
Theodore Guerin H.S.

Sarahi Osuna
Alexandria Monroe H.S.

Karsyn Powell
Elwood H.S.

Madison Rastetter
Frankton H.S.

Sherrie Riser
Frankton H.S.

Londyn Rouse
Liberty Christian School

John Sherwood
Lapel H.S.

Aliyah Weaver
Alexandria Monroe H.S.

Noah Weston
Alexandria Monroe H.S.

Kenzie Wilson
Elwood H.S.

Jayvionia Woods
Anderson H.S.

Tylor Wyant
Lapel H.S.



Dear LAMC Alums and friends,

I recently had the opportunity to spend the weekend with the new YLA class at their retreat at Camp Tecumseh. As an LAMC Board member, I had a very general view of what was about to happen. As the dad of a graduate of the last class I could see the impact from a parent's point of view. It didn't take me long to see that our YLA program is even more special than I had imagined. I can honestly say that this was one of the best, most exhausting weekends I have ever had. It was inspiring to be a small part of the process I saw going on.

I learned a lot myself, and had a great time watching them learn. That's exactly the right way to say it. You could actually watch them learn and apply what they were getting from the activities. What we were teaching them was definitely getting through. I have no doubt they will be applying what they've learned.

It's hard to describe some of the activities unless you have seen them. They were all fun, but focused on making these young adults think in new ways about themselves and their impact on others. Trust me, many of these activities would be well beyond the physical abilities of the adult classes (but it would be fun to watch them try!). There were members of the class that had some hesitation about one or two of the physical activities. The support, encouragement, respect, and acceptance they received from the rest of the class invariably helped them overcome their fears, and they all grew as a result.

One thing that I really didn't expect was the way the kids came together so quickly. By the time we got to Free Time on Friday night, they were already acting like long-time friends. The whole weekend I rarely saw small groups. At dinner on Saturday they even tried to put the tables into one big circle, so they could all see each other. At the Saturday night activity, they were sharing things about themselves and their lives that I'm pretty sure they have rarely discussed at all, if ever. When my daughter returned from the retreat last year, she immediately said that she wanted to go back. I get that. I've already let Beth and Pam know that I'm in for next year. I should be rested up by then.

The LAMC graduates and supporters should be proud of this program, and our amazing staff. Our program makes a difference to these young people, and they will use what they learn during their time in YLA to make a difference in their communities. I can't wait to stop in to see these great kids in other YLA sessions this year!

David Dodd
LAMC Board Member and 2001 LAMC Alum



A PARENT'S GRATITUDE FOR YLA

I just wanted to take a quick moment to tell you how much Brielle enjoyed her time at YLA camp this past week. She had been a little apprehensive.

As a parent, I would like to thank you for your time and commitment to such a worthy program. As you well know, it is essential that we make every effort to cultivate strong leadership traits within our youth, as well as helping them to develop relationships and grow roots, in hopes that we can retain our graduates here in Madison County.

I simply wanted to extend my gratitude for allowing Brielle to participate in YLA this year, as well as to commend your efforts as they relate to YLA.

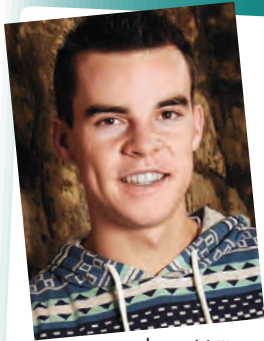
My wife and I are very excited to hear about Brielle's future endeavors with YLA!

Chad Boynton
YLA Parent '16





Let's HEAR what REALLY HAPPENS at YLA CAMP! what are **our** youth saying?



Thatcher Rouse (YLA '12)

In April of 1994, I was born at Community Hospital of Madison County. Despite living my entire life in this county, it wasn't until the fall of 2011 that I discovered what Madison County truly had to offer. That year, I was honored to be one of thirty-six local students selected to participate in the Youth Leadership Academy (YLA). As the year went along, I formed relationships with some of the most genuine and intelligent students I had ever met. And now, looking back as a college senior, I can proudly say that I still remain close friends with many members of the YLA Class of 2012.

In addition to the presentations and speakers that deliver real world leadership advice, YLA offers students the opportunity to serve the community right in their backyard. This allows students to learn and grow as servant leaders in ways that simply could not be replicated elsewhere. Whether it was serving meals and decorating for Christmas at the Christian Center, or dressing up in masks and costumes to volunteer at a local haunted trail, I learned the true value of servant leadership that year. Communities can come together and realize their full potential when their members understand the value of togetherness and are intentional in acts of service. There is no greater example of this than in the work that YLA accomplishes in the community year after year.

I would like to thank my class of 2012, all of the board member's and donors that make the Leadership Academy of Madison County possible, and the wonderful woman that is the heartbeat of this organization – Pam Shoot. I cannot thank all of these individuals enough for the time they invested in me and continue to invest in fellow YLA students. My sister, Londyn Rouse, is fortunate enough to be in the YLA Class of 2016. I will tell current and future students what I told her: take full advantage of your time spent in this group. You will get out of it what you put into it, and there is no limit to what you can learn and how you can grow from this experience. I cannot speak highly enough about the quality of this program and the people who make it possible. I look forward to seeing all of the ways that YLA positively impacts Madison County in years to come.



Sam Hammel (YLA '16)

Camp Tecumseh, now known to me as Camp Ice-Breaker or Camp Awkward at First Then Awesome, was the perfect start to our year of YLA. After just a "little" traffic, we got to camp Friday night and were warmly welcomed by the people there. Most of Friday was just trying to remember thirty-five names, but that night we also did something that set the tone for camp. We found out our own learning styles, which is proved over and over again to be key when working with others.

All day Saturday we had many tasks thrown our way. We worked in teams of two, eight, eighteen, thirty-six; anything to get us the experience we needed. In every activity we had to be aware of our teammate's learning styles if we wanted to excel at that task. Overall, two of the biggest things we learned were communication and to trust in each other. It's not every day you let people (you just met) lift you six feet in the air to get you through a gigantic "spider web". The Trusting Train didn't stop there, that same trust carried into every activity we did. If blind-folded, we trusted the people working with us to help us achieve the task. We trusted that our teammates would work to the best of their ability. Also, we wouldn't have completed anything if we didn't communicate. If you had an idea or suggestion, you wanted to share it and help the group. Now, I'm not going to lie to you, it wasn't all sunshine and rainbows. Sometimes, you couldn't get a word in. For most people, it's easier to talk than listen. Sometimes what people said had a negative effect on the group. At camp, we saw this over and over again, but by the end we had a better grasp of what real communication is. The weekend was also about connections. I can personally say I now have thirty-five new friends (including the elders it would be 42ish). Something as simple as playing cards at one in the morning brought us together every night. We wanted to spend time together. We do now, even after the weekend is over. All this happened in two days! It's these tools and these connections that are going to help us be better leaders in our community, together. I know that all thirty-six of us are more than grateful for the staff at Camp Tecumseh and the leaders of YLA's growth of the organization. This past year, the team member that participated grew substantially as a professional. She has a better understanding of who she is and how best to work with others. Leadership Academy has allowed our participants to build on their awareness of situations, understand how to affect change through enhanced communication and how to build a better community through service to others. As an alumni of LAMC I personally take pride in watching the professional growth of the sponsored employees and see tremendous value in the program.



Aaron Cruz (YLA '16)

I decided to join YLA because one of my friends from school told me that he thought it would be a good idea for me. I know that doesn't sound like the greatest reason but I had never heard about it before and I had no idea what it was about. I was pleasantly surprised at what I found when I got there!

The first thing that helped me was something that happened before camp even started. I typically don't automatically jump in and start talking to everyone but with some of the activities we did, you can't just not talk because you can't work together that way. Then we were introduced to each other as we headed to camp and got to know each other a little better.

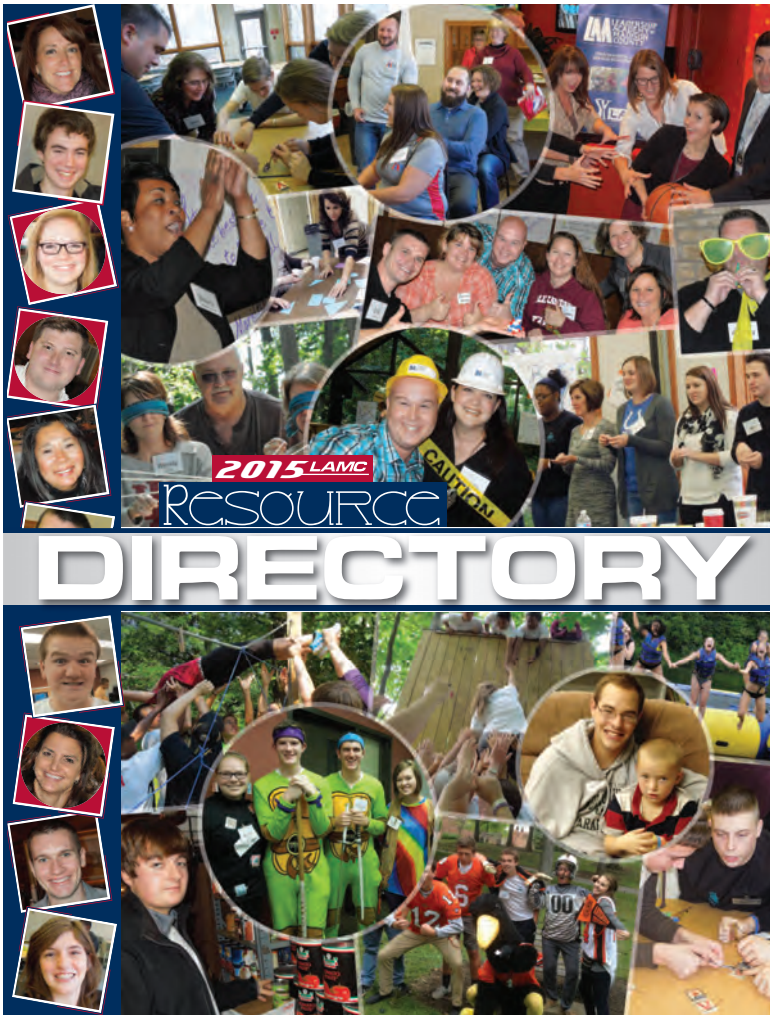
Camp was an amazing experience where I learned new "people skills", how to communicate, and how to look at problems in a different light. I feel like I will be able to use those skills in band with my Field Commander position, in my President position in Drama Club, or in any other thing I do in school or anywhere else to help people.

LAMC NEWS

2014-2015 Resource Directory

- For the 1st time, the entire Resource Directory is available on-line! Always there and at your fingertips.
- You asked (and asked and asked) and we listened. Save this **LINK** in your favorites
- Or download the pdf for easy reference. The password is "ServantLeader2015"
- Please be sure to keep us up to date on your Career and Contact Information.

**Watch your InBox for an invite
to Alumni Nite on
Monday, October 26, 2015**



**COME
& GO**

Alumni Networking Event

Please help us welcome the new Class of 2016!

To all LAMC Alumni, YLA Alumni (over 21), LAMC Class of 2016
Please bring your spouse and guests!

Wednesday, September 2, 2015 • 6:00 to 8:00 p.m.
Hoosier Park
(Dan Patch Brewhouse)

Free to attend. Light refreshments served. Cash bar available.

RSVP REQUIRED: Contact Beth Erskine at baerskine@anderson.edu or 765-641-3863

Hope to see you there! Thank You To Our Sponsor - HOOSIER PARK RACING & CASINO!



LAMC ALUMNI MEMBERSHIP WHERE YOU! WANT TO BE!

As an alumni member, your annual dues keep you connected!

Alumni members:

- Belong to an amazing, connected network of servant leaders, community leaders, leaders who are well connected and work together to make our community stronger.
- Have access to our Resource Directory
- Enjoy **FREE** networking and social events
- Are invited to continue their learning and networking through our Alumni-Nite events and featured tools soon to be available on our website
- Support the future programming of LAMC and YLA through their gifts of time, talents and treasures

- Support many, many non-profits (including LAMC) in Madison County through Gift Fair, Dance Marathon and the servant leadership training and connections our programming provides.

We are so very thankful for your gifts. Please join our membership today for as little as \$25. **CLICK HERE** for easy access to payment on our website.

Contributions can also be made by mail (payable to LAMC) at:

Leadership Academy of Madison County
1100 E. 5th Street
Anderson, IN 46012-3462

PERSONAL & CORPORATE SPONSORSHIPS are also available. Please contact us today. (765) 641-3863 or baerskine@anderson.edu

many thanks ~ many thanks ~ many thanks ~ many thanks ~ many thanks

Many thanks to our Board Members for their *Generosity & Service!*

Retiring from service in June of 2015 were:

- Keri Happe**, Eli Lilly & Company, LAMC '11
- Jeanne Lee**, Community Volunteer, LAMC '84
- Jim Pearson**, Hinds Career Center, LAMC '07
- Scott Underwood**, The Herald Bulletin, LAMC '08

Please join us in welcoming new Board Members:

- Betsy Bousman**, Harrison College, LAMC '15
- Jonathon Cook**, Attorney At Law, LAMC '10
- Michael Thigpen**, Anderson University
- Kim Townsend**, Madison County Youth Center, LAMC '01

WE'RE LOOKING FORWARD TO A GREAT YEAR!



TAKE ADVANTAGE of the leadership experience

LAMC

I thought I had too much on my plate to attend the Leadership Academy of Madison County. It seemed it would crowd my already jammed schedule. But I went ahead and committed. It was the right decision. It proved to be a refreshing break like a cool drink of water while staying on pace with the rest of my responsibilities. Everyone who has the opportunity to experience this training, business networking and personal networking should not miss it. One of the biggest challenges we face at Second Harvest Food Bank is for the general public to understand what we do. Many people would recognize the name of our organization, but would be describe us like a food pantry. We serve an 8 county area in East Central Indiana and supply food to around 110 church food pantries, soup kitchens and after-school feeding programs. We operate a warehouse

and distribution center for all kinds of dry, refrigerated and frozen grocery products. In 2014, we supplied over 9 million pounds of food to all these agencies to help alleviate hunger for food insecure families. Participating in the Leadership Academy gave me the opportunity to tell our story to around 30 other people who could share that with many others they know. I also was able to get a better understanding of what all the other class members were involved in as well. I was already acquainted with several class members prior to this training, but I was able to gain a much deeper understanding of what their home organization was and a much better understanding of them personally. It was like strengthening the loose networking net into a much tighter, more connected weaved rug. Years later, I know I can still approach any of those class members and the

connection is still there. To me, the training sessions are aimed at further development of leaders who can realize the potential of what Servant Leadership can unlock. It's up to me to use what was presented just like all tools we acquire in life. This experience has helped me to remember that small acts of kindness are very important to people. Our organization works with a lot of people who are facing huge challenges. Feeding their family is just one spoke in this wheel of poverty. Some describe it like waking up in the emergency room every day. Offering grace and expecting none is part of servant leadership. The opportunities to lead by serving are present every day. I'm very thankful to have made the decision to take advantage of this opportunity.

Tim Kean, President & CEO,
Second Harvest Food Bank of East Central Indiana
LAMC '07

2015-2016 Board of Directors



OFFICERS

Janice Stamper, CHAIR
Frederick's, Inc.

David Dodd, VICE CHAIR
Madison County Federal Credit Union

Kiersten Flint, SECRETARY
Hoosier Park Racing & Casino

Philip Lavelle, Jr., TREASURER
Lavelle Financial

DIRECTORS

Nancy Anderson
St. Vincent Anderson Regional Hospital Foundation

Betsy Bousman
Harrison College

John Collier
Robert W. Baird & Co., Inc.

Jonathon Cook
Sansberry Dickman Freeman Builta & Cook

Marcy Fry
Elwood Chamber of Commerce

Brad Justus
Kleenco, Inc.

Jane Loose
The Gardens at Willowcrest Park

Kyle Morey
Madison County Chamber

David Neidert
Anderson University

Jessica Paugh Warnke
Carter Logistics, LLC

Damon Stansberry
St. Vincent Mercy Hospital-Elwood

Michael Thigpen
Anderson University

Dan Thompson
*The Thompson Wealth Management Group/
RBC Wealth Management*

Kim Townsend
Madison County Youth Center

Quang Vinh
Community Hospital Anderson

Betty Williams
Community Volunteer

ADVISORS

Max Butcher
Remy International, Inc., YLA Advisor
Derek Sims, YLA '15
Brielle Boynton, YLA '16

ALUMNI CO-CHAIRS

Hillery Holt
Unified Group Services

Eric Scott
Open Gate Design & Decor

Erik Vohs
Key Bank

LAMC NEWSLETTER & RESOURCE DIRECTORY

Patsy York, Broadway Press

PROGRAM DIRECTOR

Pam Shoot
LAMC (Adult) and YLA (Youth) Programs
pkshoot@anderson.edu

EXECUTIVE DIRECTOR

Beth Erskine 765/641-3863 • Fax 765/641-3843
baerkskine@anderson.edu
Leadership Academy of
Madison County c/o Anderson University
1100 E. 5th Street • Anderson, IN 46012
<http://www.thelamc.org>

Legacy

Anderson University
The Boze Foundation
St.Vincent Anderson Regional Hospital

Trustee

Community Hospital of Anderson
Hoosier Park Racing & Casino
Madinger Management, LLC
Madison County Chamber of Commerce
W.R. Dunkin & Son, Inc.
YLA Class of 2015

Visionary

Gaither Music Company
Bobbette and Tom Snyder

Fellow

Madison County Federal Credit Union
The Thompson Wealth Management
Group/RBC Wealth Management
Old National Bank

Distinguished

Applewood Centre – Larry Contos
Bettie and Chris Caldwell
Beth and Gary Erskine
Cornell Family Foundation

Scott Hamer

The Herald Bulletin
Red Gold, Inc.
Ricker Oil Company
Pam and Roger Shoot

Sustaining

Anderson/Mad Co Visitors Bureau, Inc.
Brown-Butz-Diedring Funeral Home
Central Indiana Orthopedics
John Collier – R.W. Baird & Co., Inc.
Donahue Gas, Inc.
E & B Paving, Inc.
Betty & Carl Erskine
First Merchants Bank
Flagship Enterprise Center
Jill and Kevin Guion
Marion L. Hovermale
The HydroTech Corporation, Inc.
Ivy Tech Community College Foundation
Pam and Chris Jones
Kleenco Maintenance & Construction
Robert D. Loose Funeral Home, Inc.
Myers and Ford Autoworld, Inc.
Daphne and Andy Pell
Perfecto Tool & Engineering Co., Inc.
Lester & "Peg" Roudebush LYC Fund

STAR Financial Bank

St.Vincent Mercy Hospital – Elwood

Member

Anderson Federation of Teachers
And/Mad County Assoc of Realtors –
AMCAR
Terri and Mike Austin
Bestway Cleaners
Broadway Press
Carbide Grinding, Inc. –
Susan & Bob Pensec
Betty and Meredith Church
Joe Clark –
Financial Enhancement Group
Cathy and Jack Fulda
KeyBank
Kiwanis of West Anderson
Jeanne and Tim Lee
ProCare Rehabilitation
of Community Hospital
Sandlin and Company, LLC
Janice Stamper
TLS by Design – Liz Day

In Kind

Edgewater Woods
Elwood Chamber of Commerce
Harrison College
Hind's Career Center - Elwood
Madison County Community Foundation
Miller Huggins, Inc.
South Madison Community Foundation
Taylor Photography
VISION NOW innovative consulting

LAMC MISSION

Connecting servant leaders to build better communities.

"The vision of America is based on a common purpose and a common concern. Our hope of greatness is based on our vision. Previous generations of Americans worked at solving their problems to survive or to stave off tyranny. Today, effort will be required to keep society vital. The future will only meet our expectations."

- John Gardner

Renew Your Sponsorship Today *or* Become A



NEW SPONSOR

We are a 501(c)3 non-profit organization.

Contact Beth Erskine at baerskine@anderson.edu
or (765) 641-3863 or on-line at www.thelamc.org

Thank You for Your Support!

Contributions

**to the
Bobbette Snyder
Fund for the
Leadership Academy
of Madison County**



can be sent to:

**Madison County
Community Foundation**

33 West 10th • St, Suite 600
Anderson, IN 46016
Phone 765-644-0002